

# Turtle or Lizard?

Pre-braille

Level

2

Players

1

Duration

15 min

Tags

Multi-sensory  
Pretend play  
Tactile discrimination  
Tactile exploration

Skills

Compare, sort, match  
Accept new tactile experiences  
Control emotional engagement  
Develop bilateral hand use

More activities

Prints in playdough  
The Gold Nugget  
Treasure Hunt

## Turtles and lizards are lost in the sand. Help them find their way home.

Let's say LEGO Braille Bricks are lizards and classic LEGO bricks are turtles.  
Find them all, then put the lizards back on their rocks and the turtles back in the sea.

### Goals

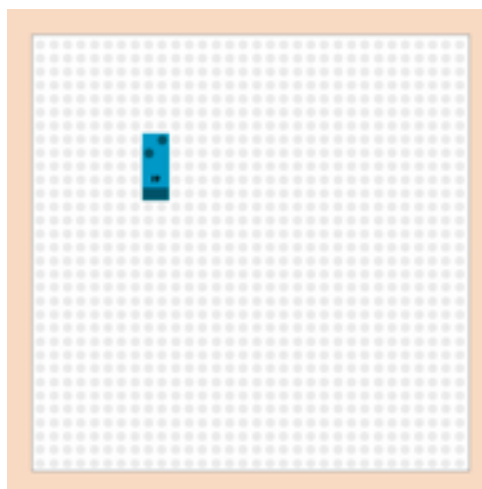
To search, find and discriminate between objects.  
To develop imagination with pretend-play.



### The adult prepares

- 1 bowl filled with water
- 1 large bin or box full of sand
- 10 random LEGO Braille Bricks
- 10 classic LEGO bricks

Hide the 20 bricks in the sand.



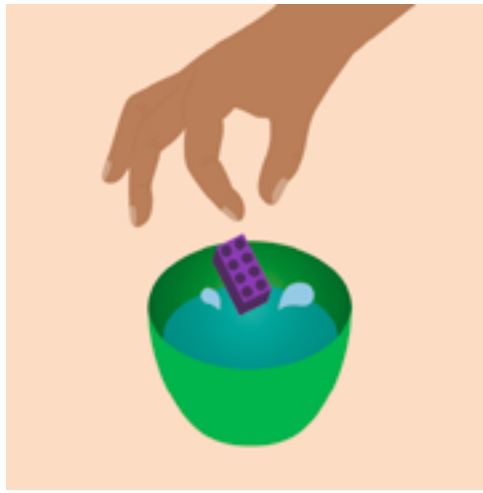
### The children play

1 Explain to the children that LEGO Braille Bricks are lizards and other bricks are water turtles. Tell them to look for them in the sand.

2 If it's a lizard, the child attaches it to a rock (the baseplate).



3 If it's a turtle...



4 ... they release it into the sea (the bowl of water).

## Facilitation tips

- Encourage discussion about turtles and lizards, their characteristics and their environments.
- Provide toy lizards and turtles for the children to explore.
- To make the game easier, use LEGO Braille Bricks for the lizards and a different object for the turtles: DUPLO bricks, balls, marbles etc.
- Peer play, taking turns.